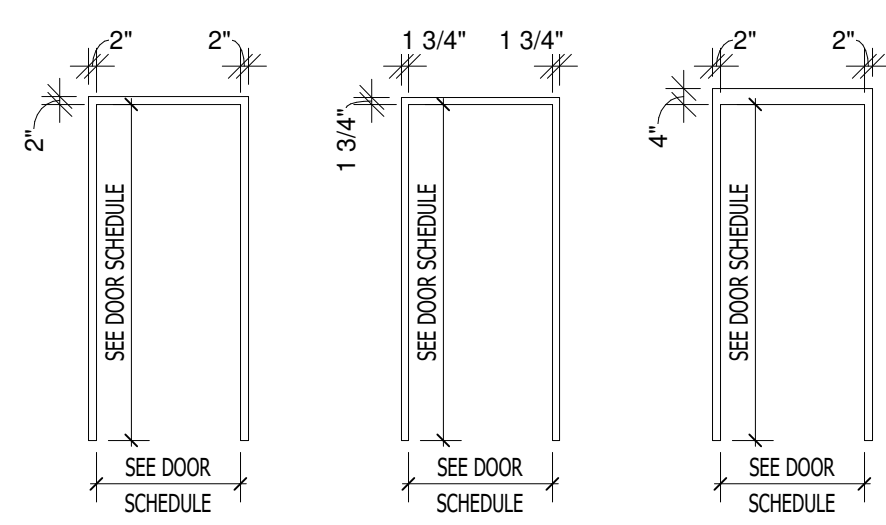


FRAME TYPES

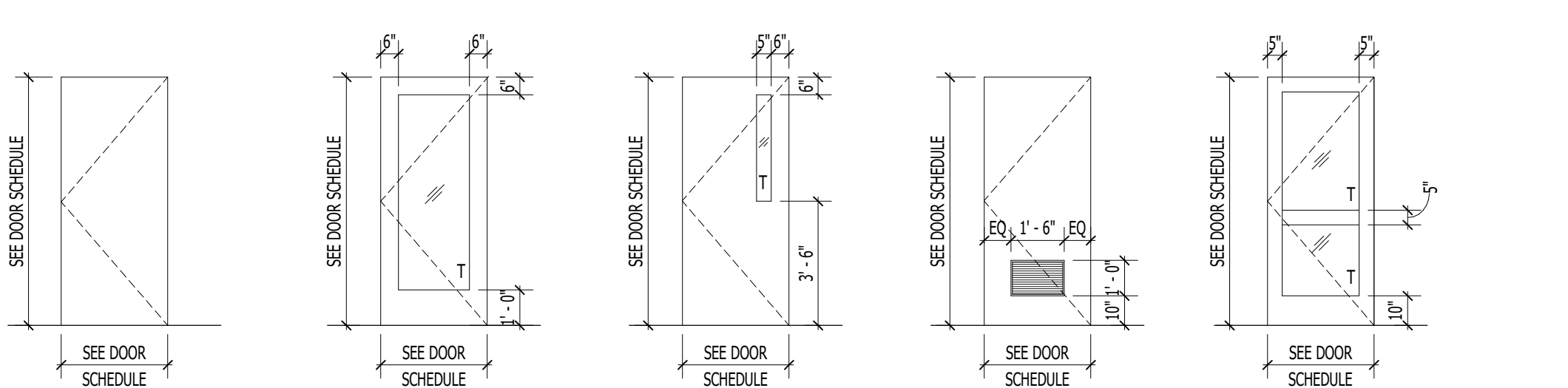


FRAME TYPE F1
HM FRAME

FRAME TYPE F2
ALUMINUM STORCK

FRAME TYPE F3
HM FRAME AT
MASONRY VENEER

PANEL TYPES



DOOR TYPE F
FLUSH

DOOR TYPE FG
FLUSH WITH FULL GLASS AND
INTERMEDIATE RAIL

DOOR TYPE N
FLUSH WITH NARROW LITE

DOOR TYPE L
FLUSH WITH LOUVER

DOOR TYPE GWS
FULL GLASS WITH WIDE STYLE
(ALUMINUM
STORCK)

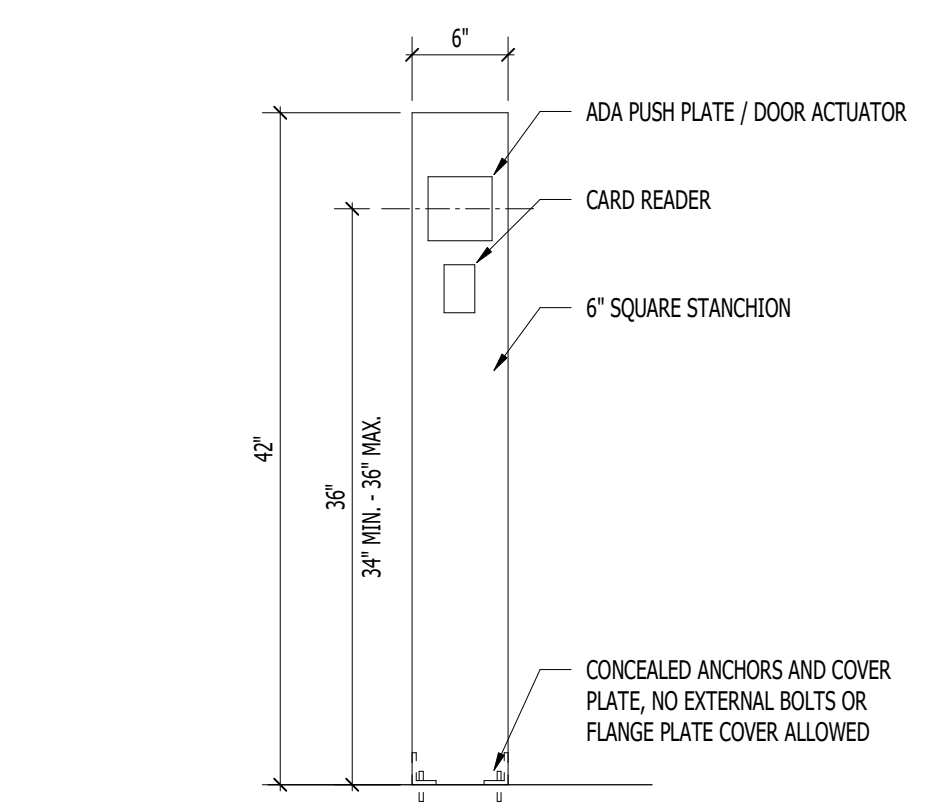
DOOR TYPE DND
OVERHEAD COUNTER SHUTTER
W/ WOODEN SLATS
BASIS OF DESIGN: ALPINE OVERHEAD DOORS
WOODEN COUNTER SHUTTER

DOOR TYPE F2
FLUSH

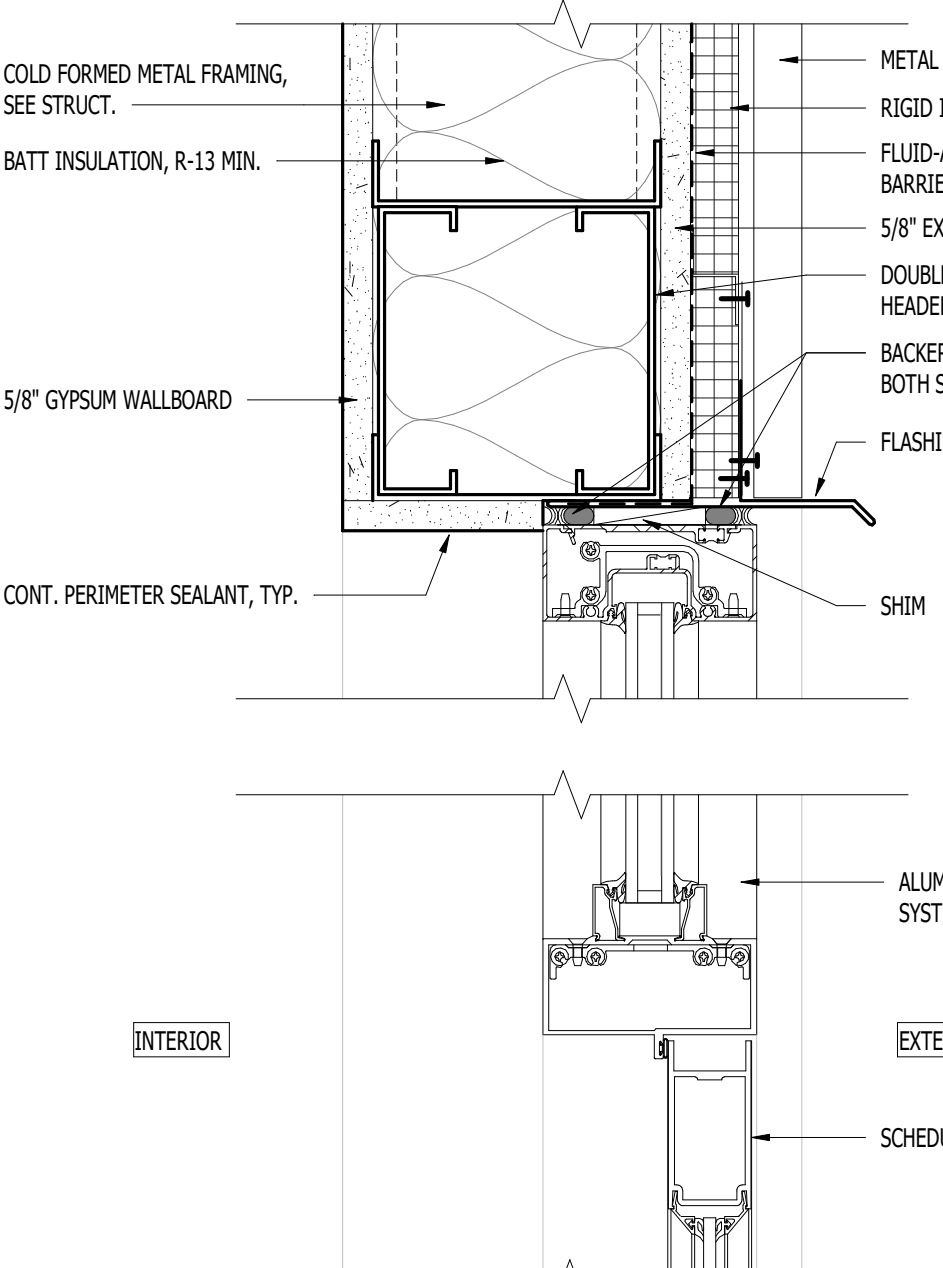
DOOR TYPE FG2
FLUSH WITH FULL GLASS AND
INTERMEDIATE RAIL

DOOR TYPE GWS2
FULL GLASS WITH WIDE STYLE
(STOREFRONT)

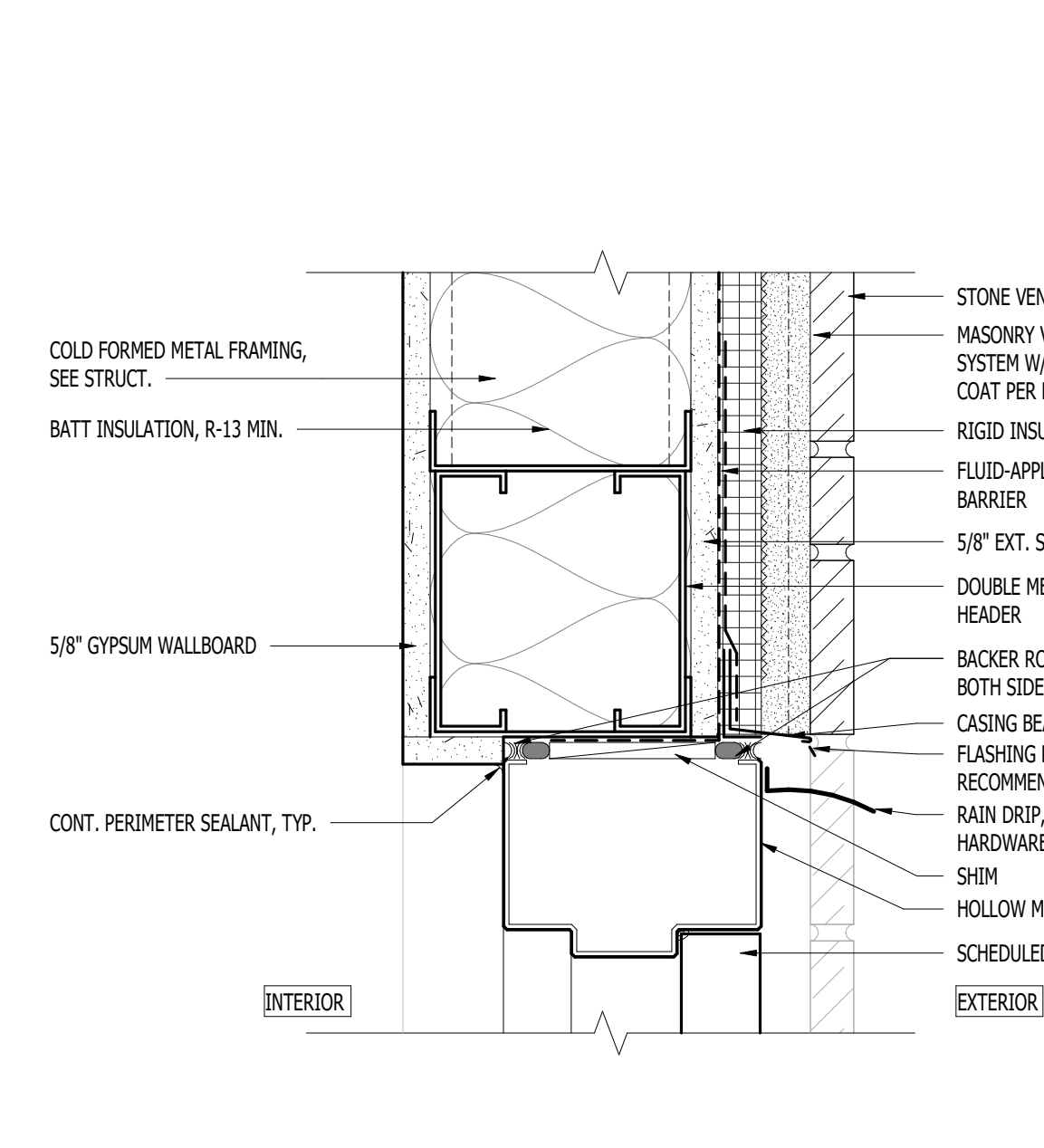
DOOR TYPE DND
OVERHEAD COUNTER SHUTTER
W/ WOODEN SLATS
BASIS OF DESIGN: ALPINE OVERHEAD DOORS
WOODEN COUNTER SHUTTER



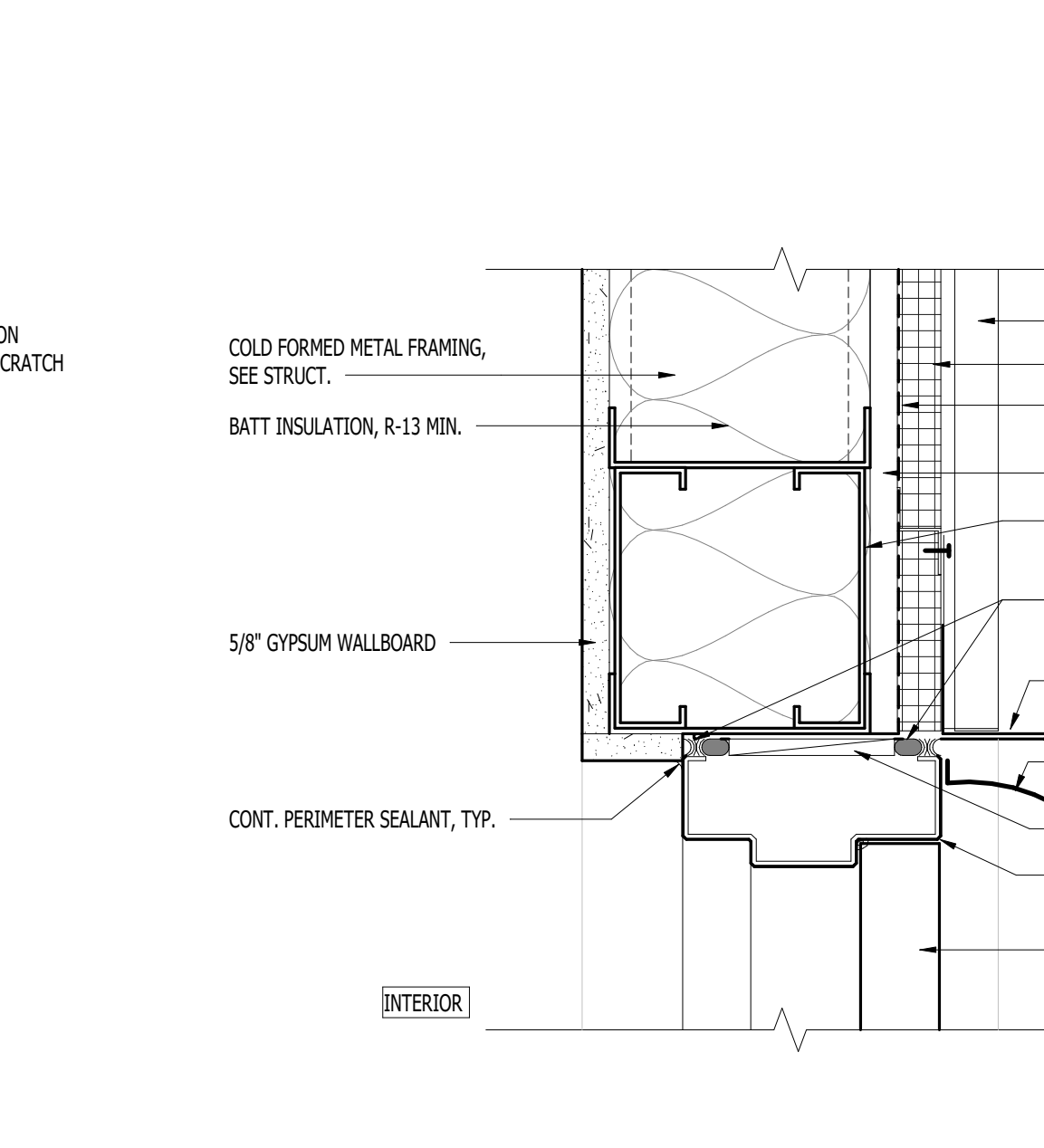
1 AUTOMATIC DOOR OPERATOR STANTION ELEVATION
1" = 1'-0"



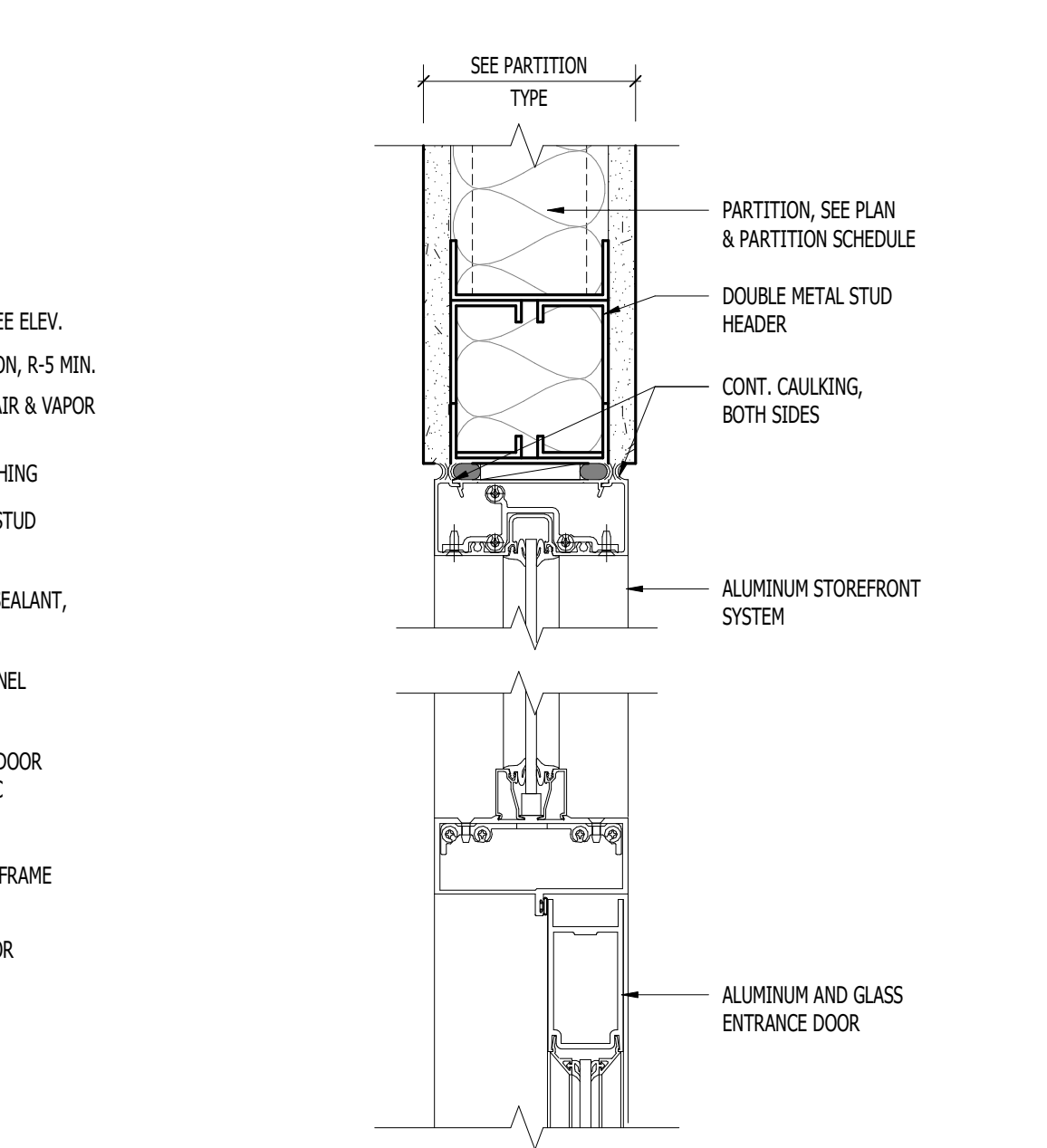
DH1 DTL DOOR EXT. SF HEAD
3" = 1'-0"



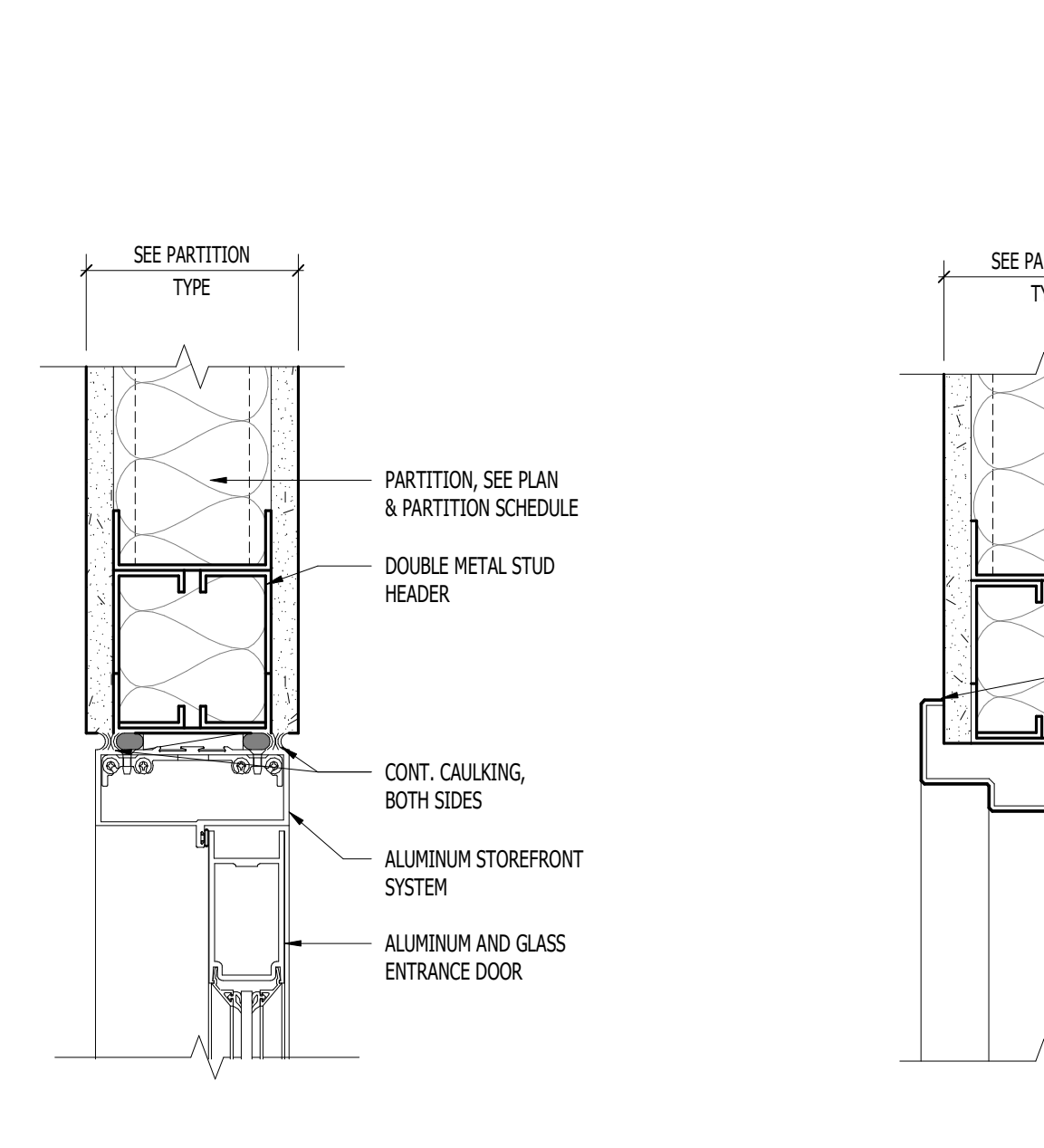
DH2 DTL DOOR EXT. HM HEAD CR
3" = 1'-0"



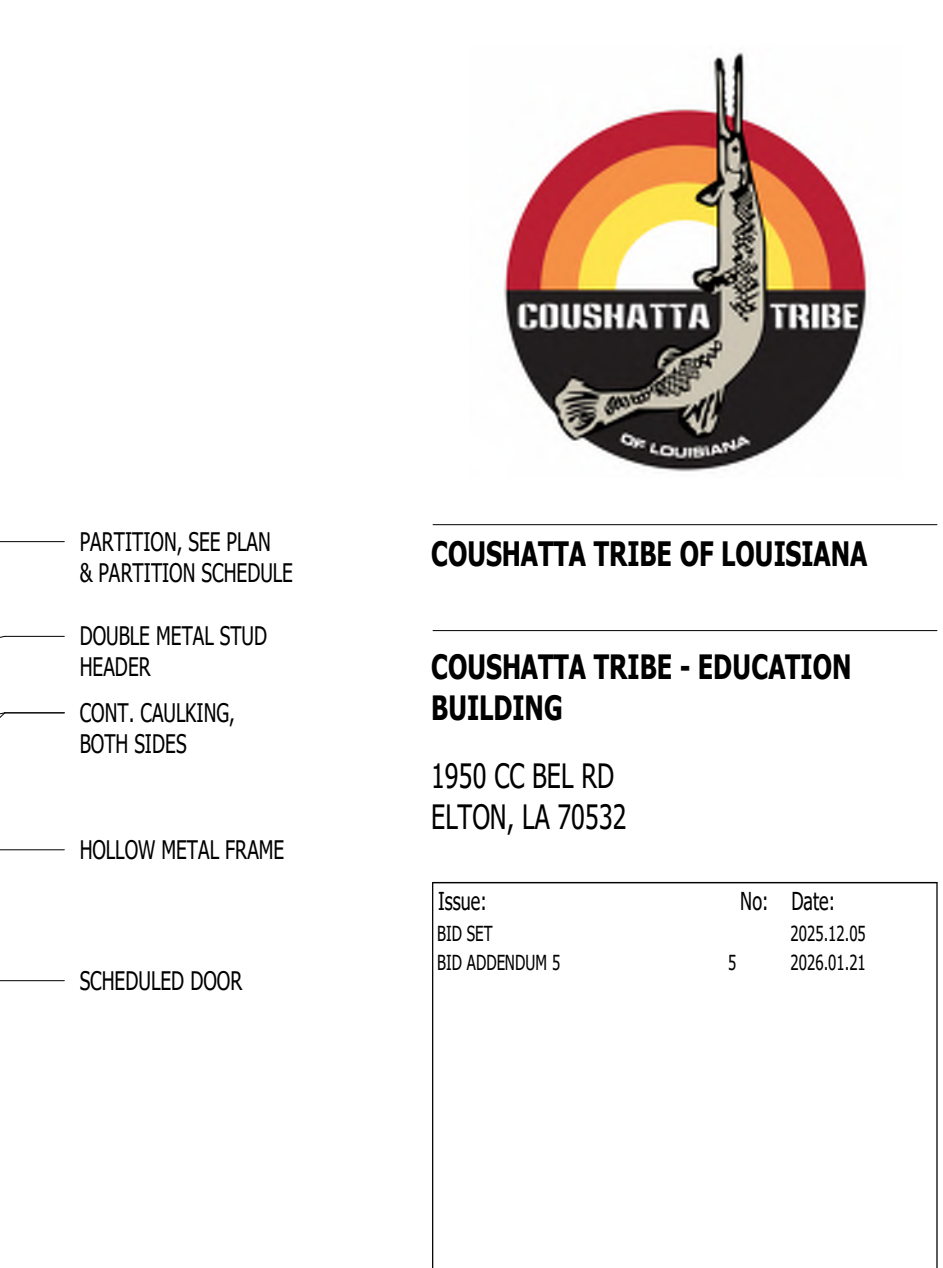
DH3 DTL DOOR EXT. HM HEAD
3" = 1'-0"



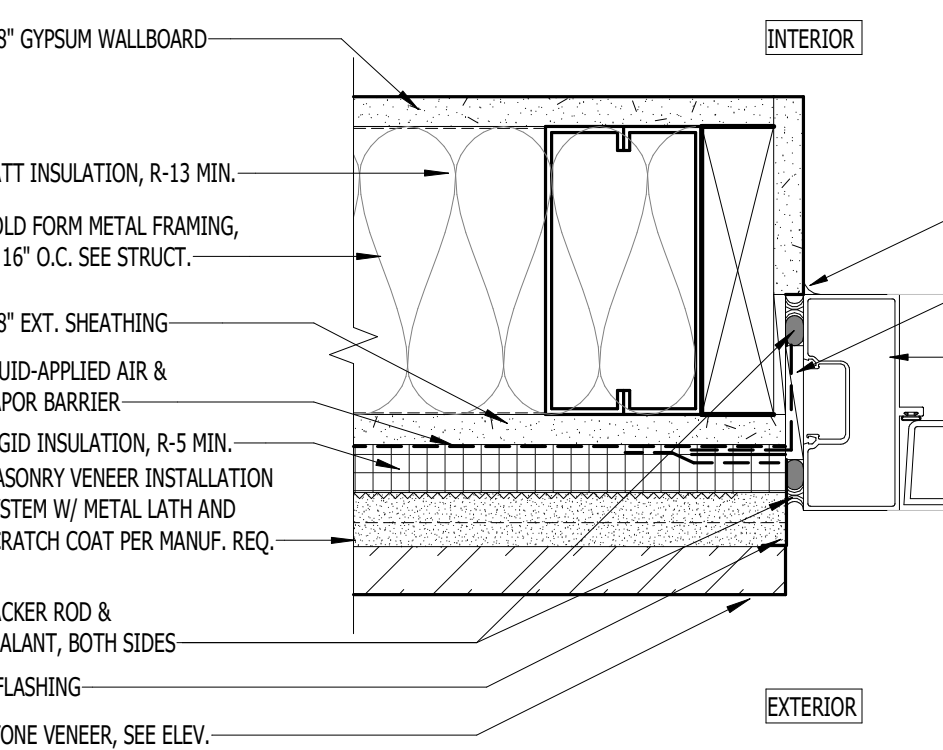
DH4 DTL DOOR INT. SF HEAD TRANSOM
3" = 1'-0"



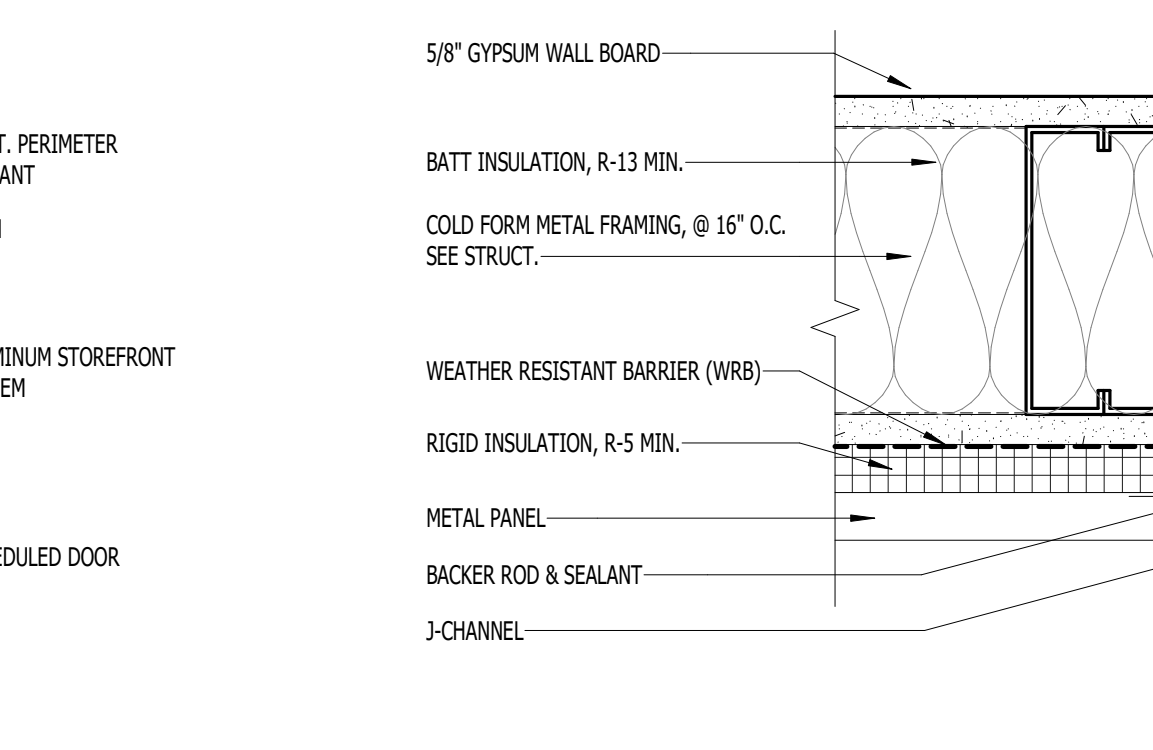
DH5 DTL DOOR INT. SF HEAD
3" = 1'-0"



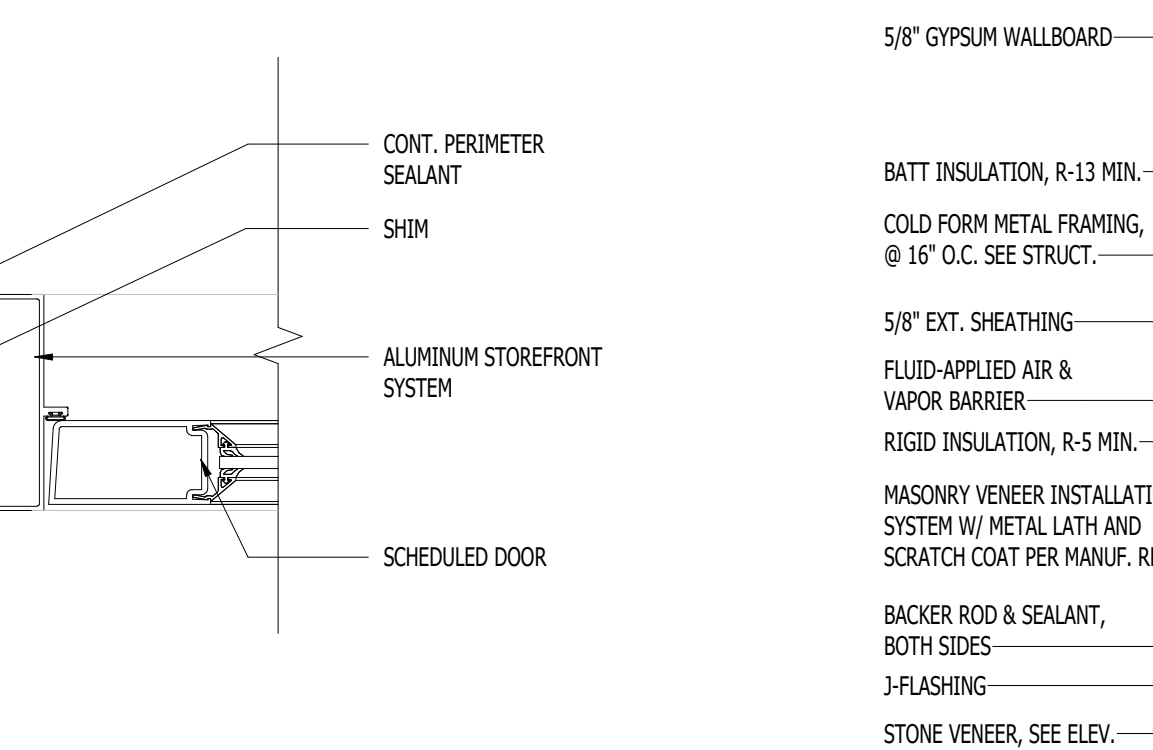
DH6 DTL DOOR INT. HM HEAD
3" = 1'-0"



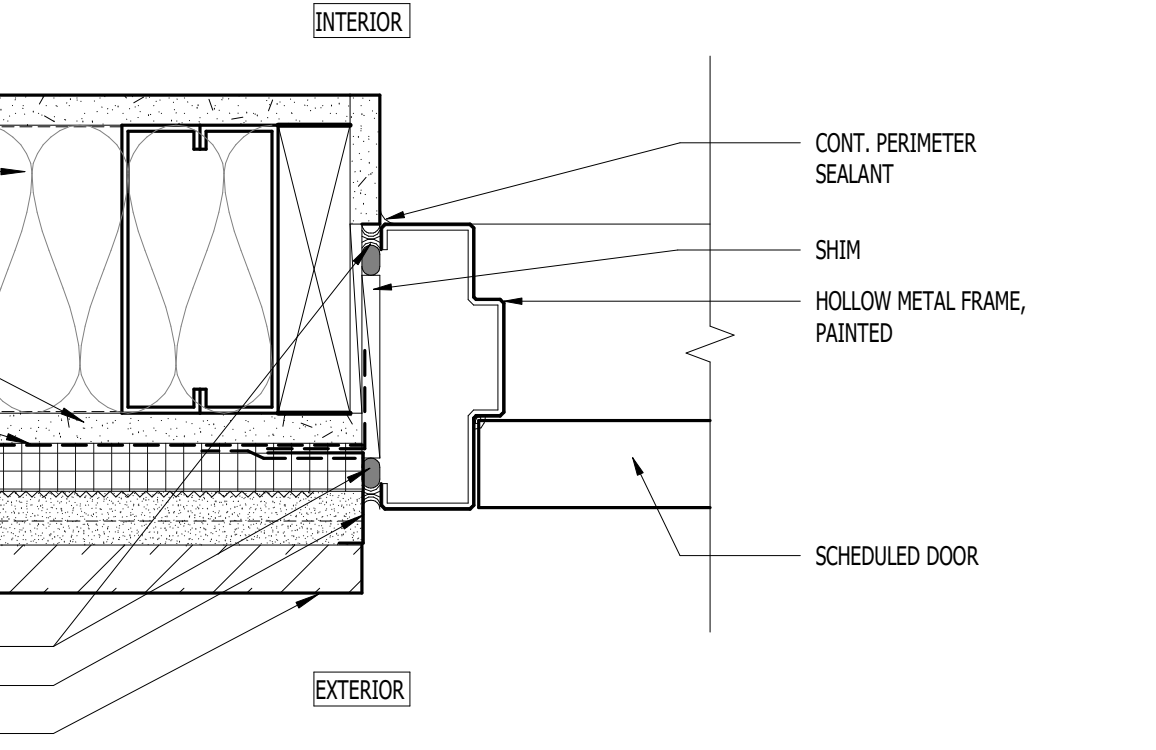
DJ1 DTL DOOR EXT. SF JAMB
3" = 1'-0"



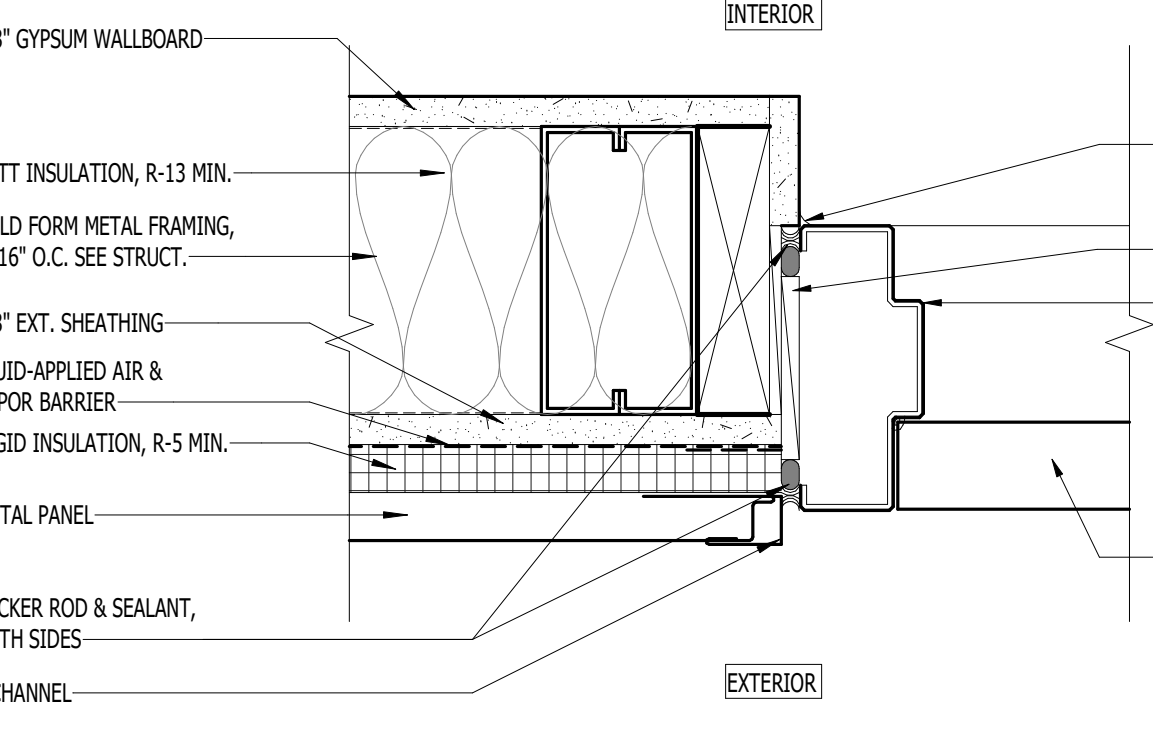
DJ2 DTL DOOR EXT. SF JAMB MP
3" = 1'-0"



DJ3 DTL DOOR EXT. HM JAMB CR
3" = 1'-0"



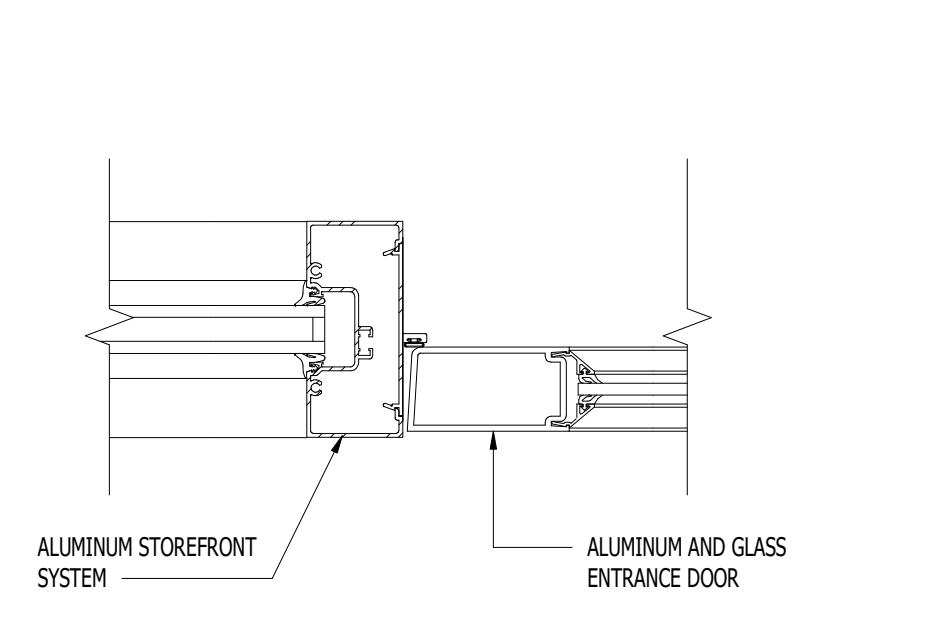
DJ4 DTL DOOR EXT. HM JAMB
3" = 1'-0"



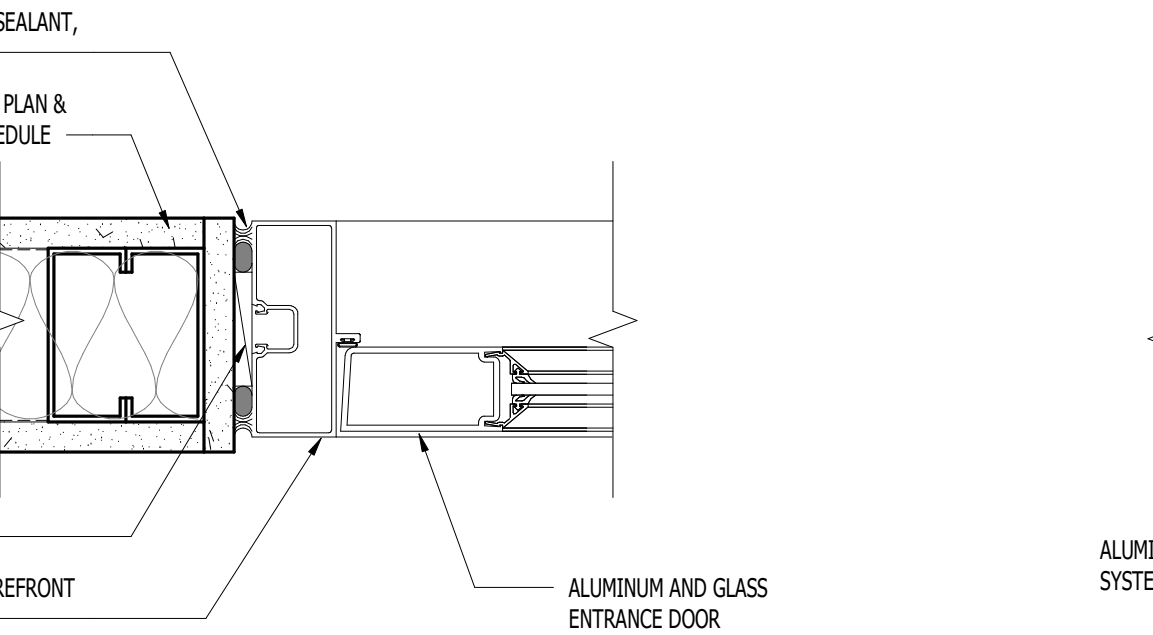
DJ5 DTL DOOR EXT. SF JAMB SF
3" = 1'-0"



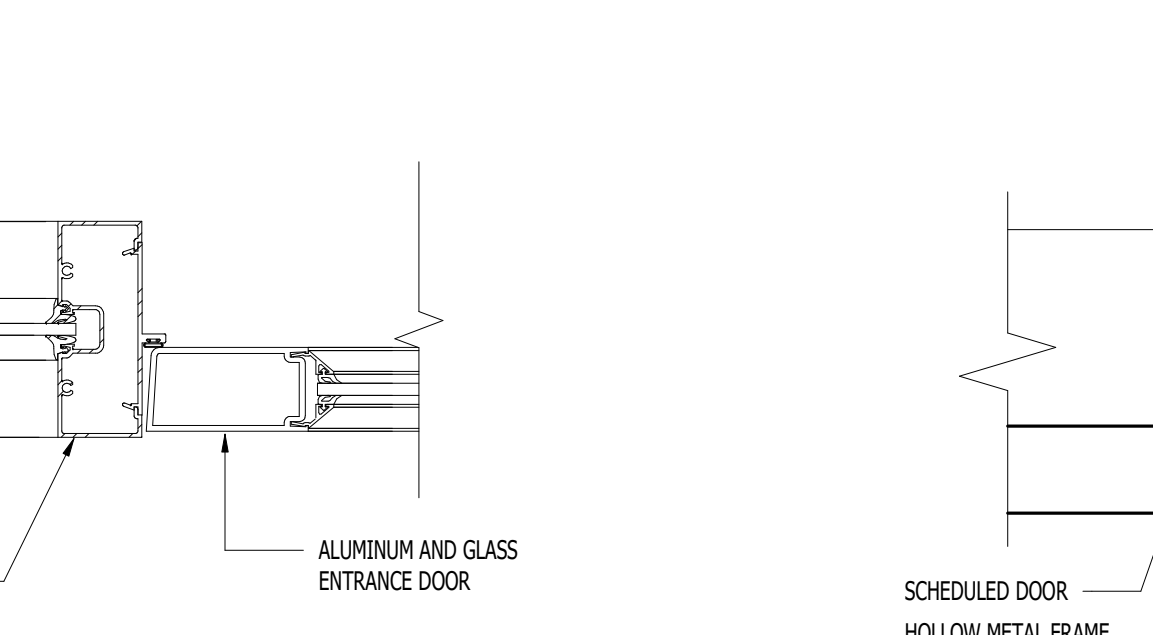
DJ6 DTL DOOR INT. SF JAMB END
3" = 1'-0"



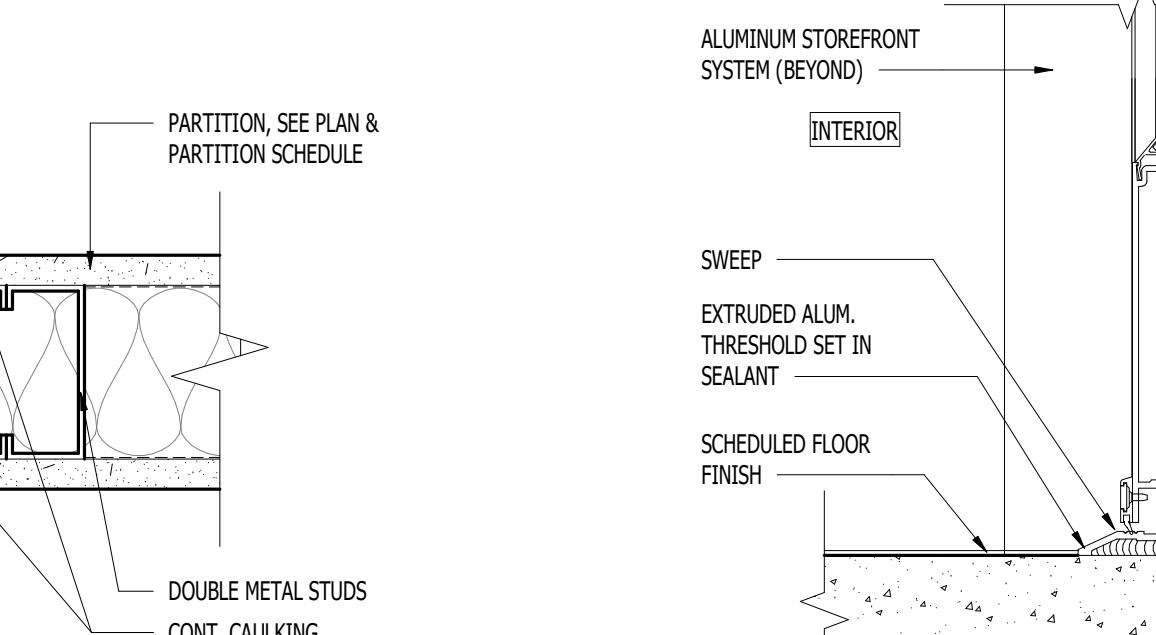
DJ7 DTL DOOR INT. SF JAMB SF
3" = 1'-0"



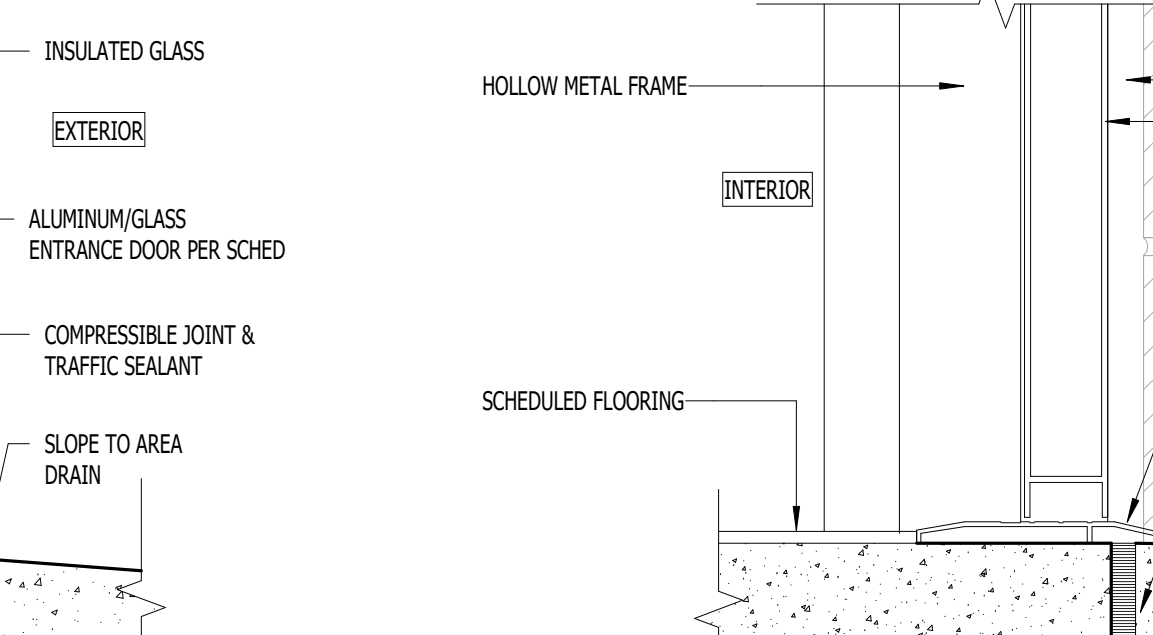
DJ8 DTL DOOR INT. HM JAMB
3" = 1'-0"



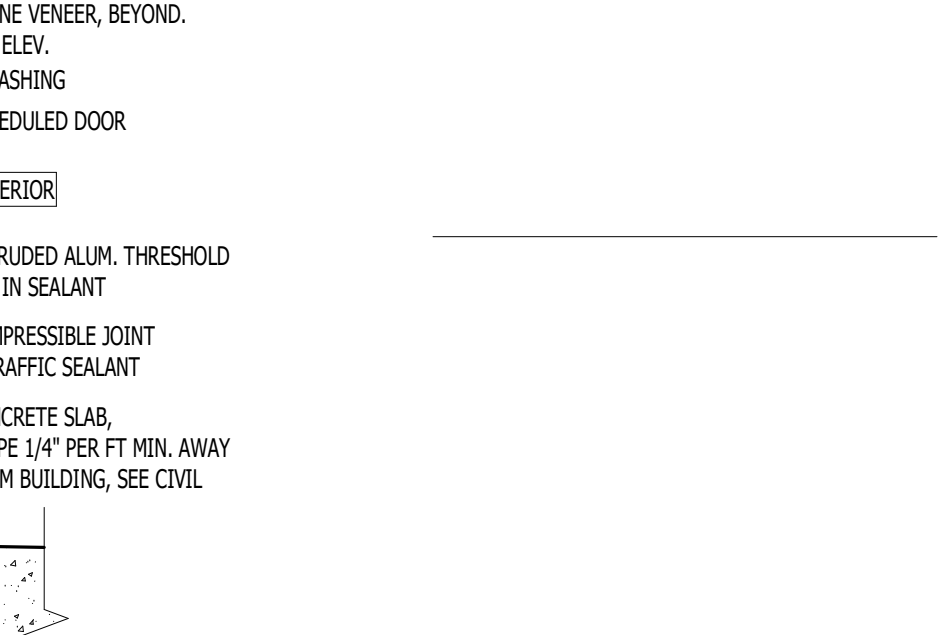
DS1 DTL DOOR EXT. SF SILL
3" = 1'-0"



DS2 DTL DOOR EXT. HM SILL CR
3" = 1'-0"



DS3 DTL DOOR EXT. HM SILL CR
3" = 1'-0"



DS4 DTL DOOR EXT. HM SILL CR
3" = 1'-0"

DOOR SCHEDULE

NUMBER	ROOM	PANEL TYPE	PANEL SIZE			PANEL MATERIAL	PANEL FINISH	DOOR FRAME		DOOR DETAIL			FIRE RATING (MIN)	HW SET	CARD READER	COMMENTS
			WIDTH	HEIGHT	THICKNESS			FRAME TYPE	FRAME MATERIAL	FRAME FINISH	HEAD	JAMB	SILL			
01A	VESTIBULE	GWS2	6'-0"	7'-0"	1 3/4"	ALUM/GLASS	DARK BRONZE	SF-13	ALUM	DARK BRONZE	DH1	DH1	DS1		18	Yes
01B	LOBBY PRE-FUNCTION	GWS2	6'-0"	7'-0"	1 3/4"	ALUM/GLASS	DARK BRONZE	SF-13	ALUM	DARK BRONZE	DH1	DH1	DS1		18	Yes
03A	LOBBY PRE-FUNCTION	GWS	3'-0"	7'-0"	1 3/4"	ALUM/GLASS	DARK BRONZE	SF-3	ALUM	DARK BRONZE	DH3	DH4			21	Yes
03B	EDUCATIONAL ASSISTANCE	F	3'-0"	7'-0"	1 3/4"	HM	PAINTED	F1	HM	PAINTED	DH3	DH3/DH4	DS2		11	Yes
04	ADMIN/RECEPTION	GWS	3'-0"	7'-0"	1 3/4"	ALUM/GLASS	DARK BRONZE	SF-4	ALUM	DARK BRONZE	DH5	DH6			02	
05	OFFICE	GWS	3'-0"	7'-0"	1 3/4"	ALUM/GLASS	DARK BRONZE	SF-4	ALUM	DARK BRONZE	DH5	DH6			02	
06	OFFICE	GWS	3'-0"	7'-0"	1 3/4"	ALUM/GLASS	DARK BRONZE	SF-4	ALUM	DARK BRONZE	DH5	DH6			02	
07	OFFICE	GWS	3'-0"	7'-0"	1 3/4"	ALUM/GLASS	DARK BRONZE	SF-4	ALUM	DARK BRONZE	DH5	DH6			02	
08	EDUCATIONAL ASSISTANCE	GWS	3'-0"	7'-0"	1 3/4"	ALUM/GLASS	DARK BRONZE	SF-4	ALUM	DARK BRONZE	DH5	DH6			02	
09	EDUCATIONAL ASSISTANCE	GWS	3'-0"	7'-0"	1 3/4"	ALUM/GLASS	DARK BRONZE	SF-4	ALUM	DARK BRONZE	DH5	DH6			02	
10	EDUCATIONAL ASSISTANCE	GWS	3'-0"	7'-0"	1 3/4"	ALUM/GLASS	DARK BRONZE	SF-4	ALUM	DARK BRONZE	DH5	DH6			02	
11	EDUCATIONAL ASSISTANCE	F	3'-0"	7'-0"	1 3/4"	WD	STAINED	F1	HM	PAINTED	DH6	DH8			45	
12	EDUCATIONAL ASSISTANCE	GWS	3'-0"	7'-0"	1 3/4"	ALUM/GLASS	DARK BRONZE	SF-4	ALUM	DARK BRONZE	DH5	DH6			02	
13	COATS	F	3'-0"	7'-0"	1 3/4"	WD	STAINED	F1	HM	PAINTED	DH6	DH8			03	
14	STUDY	FG	3'-0"	7'-0"	1 3/4"	WD	STAINED	F1	HM	PAINTED	DH6	DH8			01	
15A	COMPUTER LAB	FG2	6'-0"	7'-0"	1 3/4"	WD	STAINED	F1	HM	PAINTED	DH6	DH8			14	
15B	COMPUTER LAB	GWS	3'-0"	7'-0"	1 3/4"	ALUM/GLASS	DARK BRONZE	SF-12	ALUM	DARK BRONZE	DH1	DH1/DH2	DS1		09	
15C	COMPUTER LAB	GWS	3'-0"	7'-0"	1 3/4"	ALUM/GLASS	DARK BRONZE	SF-14	ALUM	DARK BRONZE	DH1	DH1/DH2	DS1		09	
16A	BREAK ROOM	GWS	3'-0"	7'-0"	1 3/4"	ALUM/GLASS	DARK BRONZE	SF-6	ALUM	DARK BRONZE	DH5	DH6			06	
16B	COMPUTER LAB	GWS	3'-0"	7'-0"	1 3/4"	ALUM/GLASS	DARK BRONZE	SF-6	ALUM	DARK BRONZE	DH5	DH6			06	
17	ELECTRICAL	L	3'-0"	7'-0"	1 3/4"	WD	STAINED	F1	HM	PAINTED	DH6	DH8			13	
18	MEP	F	3'-0"	7'-0"	1 3/4"	HM	PAINTED	F1	HM	PAINTED	DH2	DH2			11	Yes
19A	HALLWAY	GWS2	6'-0"	7'-0"	1 3/4"	ALUM/GLASS	DARK BRONZE	SF-15	ALUM	DARK BRONZE	DH1	DH5	DS1		15	
19B	HALLWAY	GWS2	6'-0"	7'-0"	1 3/4"	ALUM/GLASS	DARK BRONZE	SF-15	ALUM	DARK BRONZE	DH1	DH5	DS1		15	
20	JANITOR	F	3'-0"	7'-0"	1 3/4"	WD	STAINED	F1	HM	PAINTED	DH6	DH8			08	
21	WOMEN'S	F	3'-0"	7'-0"	1 3/4"	WD	STAINED	F1	HM	PAINTED	DH6	DH8			23	
22	MEN'S	F	3'-0"	7'-0"	1 3/4"	WD	STAINED	F1	HM	PAINTED	DH6	DH8			23	
23A	KITCHEN	F	3'-0"	7'-0"	1 3/4"	WD	STAINED	F1	HM	PAINTED	DH6	DH8			07	
23B	KITCHEN	F	3'-0"	7'-0"	1 3/4"	WD	STAINED	F1	HM	PAINTED	DH6	DH8			07	
23C	KITCHEN	F	4'-0"	7'-0"	1 3/4"	HM	PAINTED	F1	HM	PAINTED	DH2	DH3	DS2		12	Yes
25A	HALLWAY	GWS2	6'-0"	7'-0"	1 3/4"	ALUM/GLASS	DARK BRONZE	SF-7	ALUM	DARK BRONZE	DH4	DH7			16	
25B	HALLWAY	GWS2	6'-0"	7'-0"	1 3/4"	ALUM/GLASS	DARK BRONZE	SF-17	ALUM	DARK BRONZE	DH1	DH5	DS1		17	Yes
26A	CRAFT ROOM 1	GWS	3'-0"	7'-0"	1 3/4"	ALUM/GLASS	DARK BRONZE	SF-8	ALUM	DARK BRONZE	DH4	DH6			20	
26B	CRAFT ROOM 1	GWS	3'-0"	7'-0"	1 3/4"	ALUM/GLASS	DARK BRONZE	SF-22	ALUM	DARK BRONZE	DH1	DH1/DH2	DS1		09	
27A	CRAFT ROOM 2	GWS	3'-0"	7'-0"	1 3/4"	ALUM/GLASS	DARK BRONZE	SF-8	ALUM	DARK BRONZE	DH4	DH6			20	
27B	CRAFT ROOM 2	GWS	3'-0"	7'-0"	1 3/4"	ALUM/GLASS	DARK BRONZE	SF-21	ALUM	DARK BRONZE	DH1	DH1/DH2	DS1		09	
28A	CLASSROOM	FG2	6'-0"	7'-0"	1 3/4"	WD	STAINED	F1	HM	PAINTED	DH6	DH8			14	
28B	CLASSROOM	GWS2	6'-0"	7'-0"	1 3/4"	ALUM/GLASS	DARK BRONZE	SF-10	ALUM	DARK BRONZE	DH1	DH1/DH2			15	
29A	CLASSROOM	FG2	6'-0"	7'-0"	1 3/4"	WD	STAINED	F1	HM	PAINTED	DH6	DH8			14	
29B	CLASSROOM	GWS2	6'-0"	7'-0"	1 3/4"	ALUM/GLASS	DARK BRONZE	SF-18	ALUM	DARK BRONZE	DH1	DH1/DH2	DS1		15	
30	STORAGE	F2	6'-0"	7'-0"	1 3/4"	WD	STAINED	F1	HM	PAINTED	DH6	DH8			05	
31	AV CLOSET	F	3'-0"	7'-0"	1 3/4"	WD	STAINED	F1	HM	PAINTED	DH6	DH8			10	
32	STORAGE	F2	6'-0"	7'-0"	1 3/4"	WD	STAINED	F1	HM	PAINTED	DH6	DH8			04	
34	KITCHEN	DND	9'-2"	4'-4"	1 1/4"	MANUF.	MANUF.	MANUF.	MANUF.	MANUF.	6/A16.05	5/A16.05	4/A16.05			OVERALL FRAME WIDTH SHALL BE 10'-0"

DOOR & FRAME NOTES:
1. ALL WOOD DOORS TO BE FACTORY FINISHED. SEE INTERIORS FOR FINISH INFORMATION.
2. ALL GLAZING IN DOORS TO BE TEMPERED GLASS.
3. SEE STOREFRONT ELEVATIONS FOR STOREFRONT DOOR FRAMES.
4. FOR ALL INTERIOR DOOR SILL CONDITIONS, SEE SHEET AIS.01, TYP.
5. SEE INTERIOR FINISHES FOR HM DOOR AND FRAME FINISHES AND OVERHEAD DOOR FINISHES.

